



# EARTH DRILL SERIES 2



**SUITABLE FOR 0.75 - 3 TONNE MINI EXCAVATORS**

The Series 2 Earth Drill range is the perfect choice for small excavators between 0.75T-3T, and even though they are the smallest planetary drive in our line up they are highly engineered and built to last.

### HIGH QUALITY HYDRAULIC MOTORS

Auger Torque's huge buying power means we work closely with high quality suppliers to develop the most reliable attachments available on the market today.

### EPICYCLIC GEARBOX

Torque is amplified by using the unique Auger Torque planetary gearbox. This system allows the motors output torque to be multiplied with extreme efficiency as well as ensuring the durability and reliability you need.

### FORGED HOOD EARS

Standard with all Earth Drills in areas that we know will take a lot of strain. All hood pins are locked for extra safety making it impossible for the hood to detach from your hitch.

### NON-DISLODGE MENT SHAFT

Unique to Auger Torque, the Non-Dislodgement Shaft is a single piece drive shaft assembled top down and locked into the Earth Drill housing. This design guarantees that the shaft will never fall out, making for a safer work environment, not only for the operator but also any surrounding workers, a **MUST-HAVE FEATURE** for any safety conscious company.



Visit the Auger Torque website to watch a demo

[www.augertorque.com](http://www.augertorque.com)

CALL 13 22 12

EMAIL [sales@augertorque.com.au](mailto:sales@augertorque.com.au)

OR CONTACT YOUR NEAREST DEALER





## Features

- ▶ Unique Auger Torque planetary gearbox offering high efficiency and extreme durability
- ▶ Single piece drive shaft
- ▶ Bearings fitted 50% larger than competitors
- ▶ Heavy duty steel construction
- ▶ Auger Torque’s industry leading warranty
- ▶ Compatible with Auger Torques range of Alignment Monitoring products for **accurate earth drilling applications.**

## Applications

- ▶ Fencing
- ▶ Landscaping
- ▶ Tree Planting
- ▶ Pole and mast Installations
- ▶ Foundation piles

## Specifications

Model					
Carrier Weight		0.75-1t	1-2t	1-2.5t	1.5-3t
Torque Range	Nm	189-1164	511-1496	639-2190	830-2847
	ft-lb	139-858	377-1103	471-1615	612-2100
Oil Pressure Range	Bar	30-185	70-205	70-240	70-240
	psi	435-2683	1015-2973	1015-3481	1015-3481
Oil Flow Range	lpm	15-32	20-45	25-57	27-65
	gpm	4-8	5-13	7-15	7-17
Speed Range	rpm	38-81	44-98	43-99	36-87
Unit Height	mm	450	585	585	585
	inch	18	23	23	23
Unit Diameter	mm	168	200	200	200
	inch	7	8	8	8
Unit Weight	kg	35	46	47	48
	lb	77	98	104	106
Output Shaft Std (adaptors available)	mm	50 / Stihl	65	65	65
	inch	2	2.56	2.56	2.56

## HITCH OPTIONS



Single Pin



Double Pin

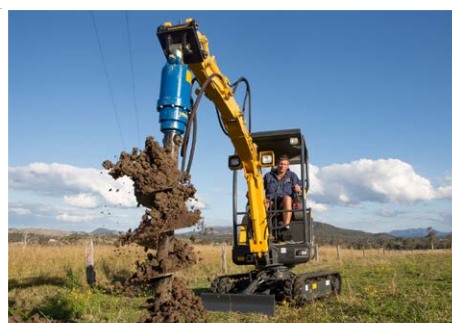


DP Cradle

## Drilling Performance

Auger Series		S2	S4	S4	S4
Auger Diameter	mm	100-300	100-400	100-450	100-500
	inch	4-12	4-16	4-18	4-20
Drilling Depth*	m	0.9	2-1	2.2-1	2.5-1.3
	ft	#	7-3	7-3	8-4

\*Dependent on ground type



Part of the Auger Torque Earthmoving range

EARTH DRILLS | AUGERS & WEAR PARTS | MAST-BASED DRILLING RIG | TRENCHERS | HAMMERS

[www.augertorque.com](http://www.augertorque.com)

CALL 13 22 12

EMAIL [sales@augertorque.com.au](mailto:sales@augertorque.com.au)

OR CONTACT YOUR NEAREST DEALER