



# EARTH DRILL - SERIES 3.5

## Features

- ▶ Unique Auger Torque planetary gearbox offering high efficiency and extreme durability
- ▶ Single piece drive shaft
- ▶ Bearings fitted 50% larger than competitors
- ▶ Heavy duty steel construction
- ▶ Auger Torque's industry leading warranty
- ▶ Compatible with Auger Torques range of Alignment and Torque Monitoring products for **accurate earth drilling applications.**

## Applications

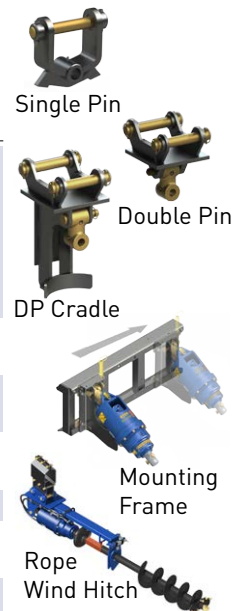
- ▶ Pre-augering
- ▶ Pole and mast installations
- ▶ Rail applications
- ▶ Deep hole applications
- ▶ Well boring

## Specifications

Model		5500MAX	7000MAX	8000MAX	10000MAX	5500TC	7000TC
Carrier Weight							
Excavator		4.5-6t	5-7t	6-8t	-	-	-
Skidsteer		100hp	135lpm/36gpm	150lpm/40gpm	-	-	-
Backhoe		-	✓	✓	✓	-	-
Telehandler		4.5-7t	5-8t	-	-	-	-
Truck Crane		-	-	-	-	15t/m	9-18t/m
Torque Range	Nm ft-lb	1685-5477 1243-4039	2133-6931 1573-5112	2717-8152 2004-6012	3281-10662 2419-7863	1685-5477 1243-4039	2098-6819 1547-5029
Oil Pressure Range	Bar psi	80-260 1160-3771	80-260 1160-3771	80-240 1160-3481	80-260 1160-3771	80-260 1160-3771	80-260 1160-3771
Oil Flow Range	lpm gpm	40-115 11-30	60-135 16-36	70-150 19-40	70-150 19-40	15-50 4-14	15-50 4-14
Speed Range	rpm	30-87	36-81	33-70	27-58	11-38	9-30
Unit Height	mm inch	780 31	780 31	780 31	883 35	780 31	780 31
Unit Diameter	mm inch	269 11	269 11	269 11	290 12	269 11	269 11
Unit Weight	kg lb	108 238	112 247	116 260	162 358	108 238	110 243
Output Shaft Std (adaptors available)	mm inch	75 Square 2.5 Hex	75 Square 2.5 Hex	75 Square 2.5 Hex	75 Square 2.5 Hex	75 Square 2.5 Hex	75 Square 2.5 Hex
<b>Drilling Performance</b>							
Auger Series		S5	S5	S5	S6	S5	S5
Auger Diameter	mm inch	150-750 6-30	150-900 6-36	150-1200 6-48	150-900 6-36	150-800 6-32	150-1000 6-40
Drilling Depth*	m ft	4-2.4 13-8	5-2.1 16-7	6-2.4 20-8	6.5-3.2 21-10	4-2.1 13-7	5-1.6 16-5

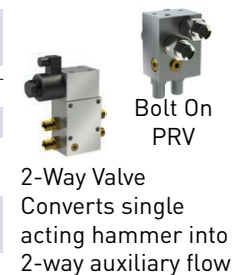
\*Dependent on ground type

## HITCH OPTIONS

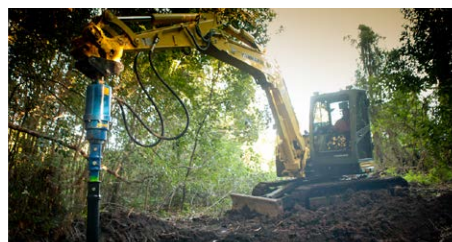


## EXTRAS

(model dependent)



2-Way Valve  
Converts single acting hammer into 2-way auxiliary flow



Part of the Auger Torque Earthmoving range

EARTH DRILLS | AUGERS & WEAR PARTS | MAST-BASED DRILLING RIG | TRENCHERS | HAMMERS

[www.augertorque.com.au](http://www.augertorque.com.au)

CALL | EMAIL [sales@augertorque.comDX](mailto:sales@augertorque.comDX) | OR CONTACT YOUR NEAREST DEALER