

# Excavators 13T to 20T

Hydraulic Hoses are supplied but not shown

15,000 6K SHOWN WITH OPTIONAL PRV

**Excavator 13T to 17T Backhoes**  
**Drilling Diameter 150mm to 900mm**  
**S6 Auger Range**

**12,000 (6K)**  
**Earth Drill**

**Excavator 13T to 20T**  
**Drilling Diameter 150mm to 1.2M**  
**S6 Auger Range**

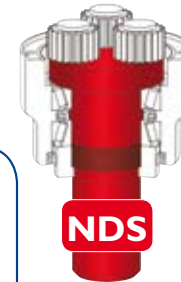
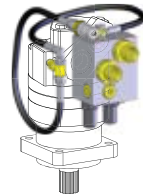
**20,000 (6K)**  
**Earth Drill**

**Excavator 13T to 17T Backhoes**  
**Drilling Diameter 150mm to 1.2M**  
**S6 Auger Range**

**15,000 (6K)**  
**Earth Drill**

**OPTIONAL PRESSURE RELIEF VALVE KIT**

Model	Part Number
12,000 6K	25-4615
15,000 6K	25-4615
20,000 6K	25-4615



**UNIQUE FEATURE**  
 Non Dislodgement Shaft

Earth Drill Models	12,000 <sup>6K</sup>	15,000 <sup>6K</sup>	20,000 <sup>6K</sup>
Part Number (75mm Sq)	21 - 40700	21 - 40400	21 - 40800
Excavator Machine Weight	13T to 17T	13T to 17T	13T to 20T
Torque	12701 Nm	15179 Nm	19206 Nm
Pressure	240 Bar	240 Bar	240 Bar
PRV	Optional	Optional	Optional
Oil Flow Range	70 to 170 l/m	80 to 170 l/m	100 to 170 l/m
Hydraulic Hoses	1" BSP	1" BSP	1" BSP
Output Shaft (STD)	75mm Sq	75mm Sq	75mm Sq
Unit Weight	172kg	175kg	195kg
Unit Height	930mm	930mm	1130mm
Unit Diameter	290mm	290mm	290mm
Auger Series	S6	S6	S6
Length	1.75M	1.75M	1.75M
Auger Diameter Range	150-900mm	150mm-1.2M	150mm-1.2M

**Augers** with shallow pitch flight for more effective soil removal

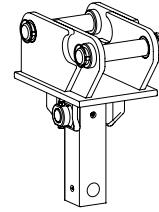




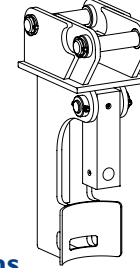
### S6 Extension Shafts - 75mm Square Drive

Length	Part Number
1.5M	31-6150600
2M	31-6200600
3M	31-6300600

DOUBLE PIN HITCH



DOUBLE PIN CRADLE HITCH



### Mounting Hitch Options

Pin Size	Double Pin Part Number	Double Pin Cradle Part Number
45mm	12-454500	13-454500
50mm	12-455000	13-455000
55mm	12-455500	13-455500
60mm	12-456000	13-456000
65mm	12-456500	13-456500
70mm	12-457000	13-457000
80mm	12-458000	13-458000

### INFORMATION WE REQUIRE TO GIVE YOU THE BEST OFFER.

- Machine Type .....
- 2 Way Oil Flow 
  - Oil Flow .....l/m
  - Oil Pressure.....bar
- Hitch Specifications
  - Pin Diameter .....mm
  - Pin Centres .....mm
  - Dipper Width.....mm
- Auger Diameters
  - .....mm
  - .....mm
  - .....mm
- Extension Shafts .....mm

## S6 Auger Range - 75mm Square Drive (Length 1.75M) for 12,000<sub>6K</sub> - 15,000<sub>6K</sub> - 20,000<sub>6K</sub> Earth Drills

### Earth and Clay Drilling (Complete with Earth Teeth and Earth Pilot)

Dia	150mm	200mm	225mm	250mm	300mm	350mm	400mm	450mm	500mm	600mm	750mm	800mm	900mm	1.2M
P/N	30-60151600	30-60201600	30-60231600	30-60251600	30-60301600	30-60351600	30-60401600	30-60451600	30-60501600	30-60601600	30-60751600	30-60801600	30-60901600	30-61201600

### Abrasive Drilling (Complete with Tungsten Teeth and Tungsten Pilot)

Dia	150mm	200mm	225mm	250mm	300mm	350mm	400mm	450mm	500mm	600mm	750mm	800mm	900mm	1.2M
P/N	N/A	30-60205600	30-60235600	30-60255600	30-60305600	30-60355600	30-60405600	30-60455600	30-60505600	30-60605600	30-60755600	30-60805600	30-60905600	30-61205600

### Soft Rock / Abrasive Drilling (Complete with Rock Teeth and Rock Pilot)

Dia	150mm	200mm	225mm	250mm	300mm	350mm	400mm	450mm	500mm	600mm	750mm	800mm	900mm	1.2M
P/N	30-60156600	30-60206600	30-60236600	30-60256600	30-60306600	30-60356600	30-60406600	30-60456600	30-60506600	30-60606600	30-60756600	30-60806600	30-60906600	30-61206600